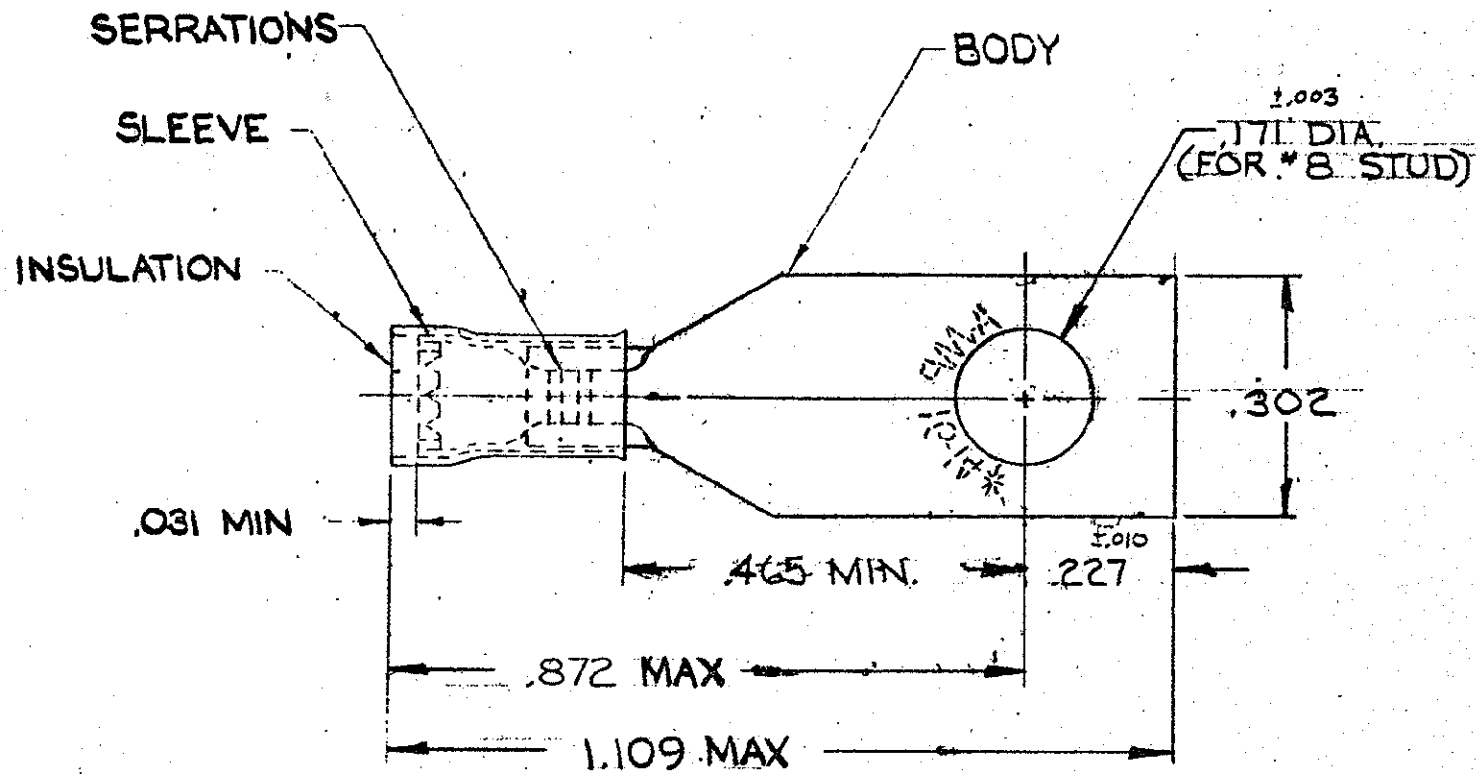


© 1959 BY AMP INCORPORATED. ALL RIGHTS RESERVED. AMP PRODUCTS COVERED BY PATENTS AND/OR PATENTS PENDING.



REVISIONS				
ZONE	LTR	DESCRIPTION	DATE	APPROVED
	E	REDRAWN, REV. & ADDED TAPE NO'S P. 1079	1-27-70	RCY
	F	REV. PER P80-0048	4-17-80	JEM
	G	INACTIVATED 2-2 PER ECN P-9384	5-3-82	JEM
	H	INACTIVATED 2--1, 2-3 PER P-9261	12-17-82	GM
	J	OBS 2--2 & 2--5 G-2591	10-20-87	PMF
	K	OBS 2--1 G-2610	3/15/88	PMF
	L	REV PER G-4732	7/29/88	PMF
	M	OBS. 327946 G-3959	10/6/88	AG
	N	OBS. 2-3 PER G-5154	10/5/89	DKS/WJN
	P	REV PER G-5647	1/23/91	DKS/WJN
	R	REV PER 063A-0684-01	12/18/01	WJ/TM

⚠ PRELIMINARY - NOT FOR PRODUCTION

OBSOLETE	1	<del>2-327946-1 ON TAPE</del>	<del>2-327946-3</del>	<del>INSULATION: NYLON (MIL-M-20693) TYPE I COLOR: BLUE</del>
OBSOLETE	1	<del>WIRE TERMINAL</del>	<del>2-327946-4</del>	<del>BODY &amp; SLEEVE COPPER (QQ-C-576) TIN PL (MIL-T-10727)</del>
	1	2-327946-4 ON TAPE	2-327946-5	INSULATION: NYLON COLOR: BLUE
	1	WIRE TERMINAL	2-327946-4	SLEEVE: COPPER (QQ-C-576)
	1	327946 ON TAPE	2-327946-2	BODY: COPPER (QQ-C-576) TIN PL (MIL-T-10727)
OBSOLETE	1	<del>WIRE TERMINAL</del>	<del>327946</del>	
QTY	DESCRIPTION	PART NO.	MATERIAL & FINISH	

2-327946-4	⚠ 2-327946-5	.105	.150	⚠ OBSOLETE
<del>2-327946-1</del>	<del>2-327946-3</del>	<del>.115</del>	<del>.170</del>	
<del>327946</del>	<del>2-327946-2</del>	<del>.115</del>	<del>.170</del>	
PART NO.	PART NO. ON TAPE	"A"	"B"	

UNLESS OTHERWISE SPECIFIED DIMENSIONS ARE IN INCHES  
TOLERANCES ON:  
DECIMALS  $\pm .008$   
ANGLES  $\pm 5^\circ$

CONTRACT NO. #

DR. *Sturk* 1-20-70

CHK. *RCY* 1-27-70

APPD. *W. J. M.* 1-27-70

REQ. *W. J. M.* 1-27-70

DSGN APPD.

OTHER APPD.

SEE TABLE

**AMP** AMP INCORPORATED  
HARRISBURG, PENNSYLVANIA

NAME: WIRE TERMINAL  
P.I.D.G. - RECTANGULAR TONGUE  
WIRE SIZE: 16-14

SIZE: B CODE IDENT NO.: 00779 NUMBER: 327946

SCALE: N.T.S. SHEET: 1 OF 1

CUSTOMER DRAWING